

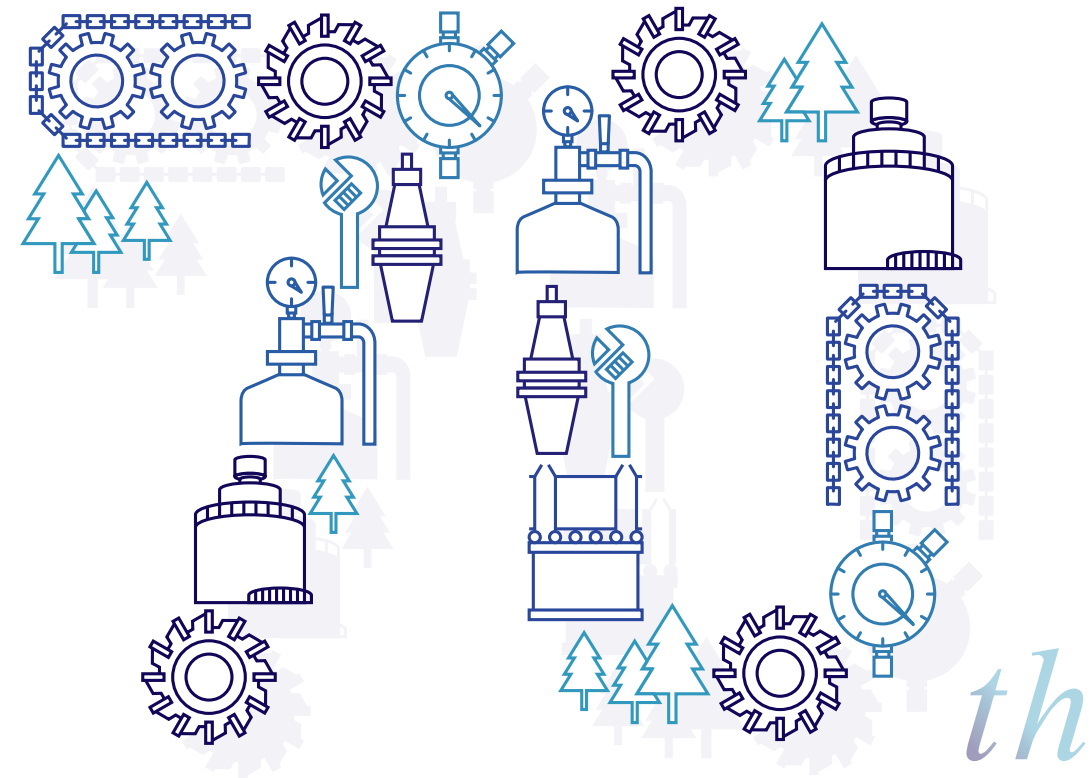
Sankyo Seiki 三共精機株式会社



*Sankyo-Seiki Co., Ltd.  
Company Profile*

*Opening New Doors  
for Manufacturing  
MONODUKURI*

Sankyo Seiki



### A Seventy-year History of Achievement

Our 70 years of achievement have fostered a diverse business network and laid the solid foundation on which we will open new doors to the future.

## Major Manufacturers 300 Companies

As of December , 2016

## Major Clients 400 Companies

As of December , 2016



## Our Strength

01



### Expertise

Our company is an authorized agent for numerous manufacturers, and a majority of our employees are certified professionals with expert training. With extensive experience in improving productivity and lowering costs at a variety of manufacturing sites, we provide expert assistance to meet our clients's need.

02



### Coordinating Strength

Our internal framework is composed of specialized groups organized by industry who share information on and address challenges distinct to each industry. From our external network of more than 300 manufacturers, we select the optimal partner and match our clients with the products they need. This coordinating potential allows us to provide one-stop proposals that are both precise and prompt.

03



### Global Strength

We offer prompt and reliable delivery of high-quality Japanese products at low cost. Multilingual staff who speaks English, Chinese, Cantonese, Korean, etc., enables hassle-free transactions and dedicated services to global customers. With the distribution network and international trade experience we have cultivated over the years, we offer a complete satisfaction guarantee to ensure each client receives the expected value from our services.

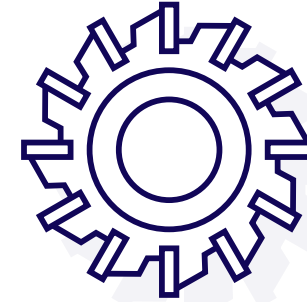


## Major Products

We offer quick and accurate solutions to the various challenges which arise at the manufacturing worksite.

01

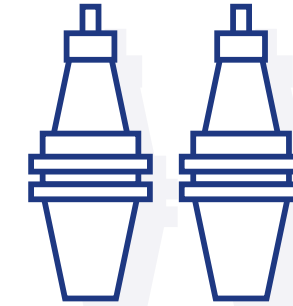
Cutting /  
Gear  
Cutting



Optimum Product Proposals Based on  
Our Rich Experience in Material Processing

02

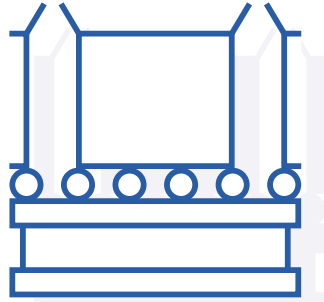
Machine  
Tools /  
Tooling



Comprehensive Solutions Covering Selection,  
Construction and Installation

03

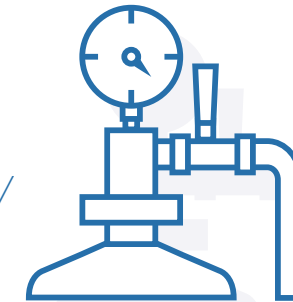
Factory  
Equipment /  
Material  
Handling



Ideas and Know-how Acquired from  
Extensive Onsite Experience

04

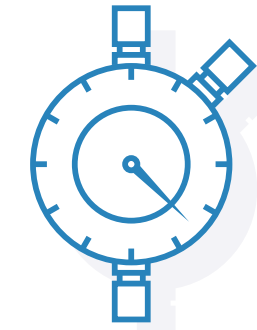
Hydro-  
pneumatics /  
Mechatronics /  
Conduction



Proposals for Optimal Specifications  
to Meet the Client's Needs at the Desired Cost

05

Measurement



Professional Advice from Knowledgeable  
and Qualified Experts

06

Eco-friendly



Increasing Profits through Environmental Awareness  
and Reductions to Energy and Resources



President Message

Supporting the ever-evolving manufacturing industry

EMPOWERMENT

Constant Study – Improving the abilities of all employees

We hope to be a premier solutions provider for the challenges facing manufacturing. For customers engaged in this constantly evolving world, there will always be new challenges to face. There will also be trials not yet detected by the customer and a demand to implement proactive improvements. As a leading provider of solutions to manufacturing’s most pressing challenges, we must possess the ability to detect and assess problems. We must then be able to define these problems and, exercising our role as mediator, provide optimal solutions to the challenges our customers face. In accomplishing this, it is necessary not only to understand each product, technology and the relevant data, but also for each employee to improve their ability to build strong communication networks with a comprehensive knowledge of the client’s company and the social problems and global environment surrounding it. We believe, in turn, that cultivating personnel is essential in continuing as a solutions provider to manufacturing’s challenges.

COEXISTENCE

Living Well – capitalizing on diversity and connecting our company both within and without

We hope to promote coexistence and co-prosperity. Henceforth, it is our hope that societies will be places where people with a diverse range of circumstances and worldviews can coexist together. Up until now, our company has accepted internships from domestic and international students, employed seniors, foreign exchange students and disabled persons and provided support for female labor and child-rearing. This has resulted in a wide expansion of our operations. Fascinating organizations attract fascinating people, companies and businesses. Connecting and cooperating with a variety of persons in order to make new discoveries through our work, we strive to be a company where fascinating and diverse people exist and grow together

Sankyo-Seiki Co., Ltd.  
President

Takeshi  
Ishikawa

ENVIRONMENT

Working Well - Creating an environment for continuing growth

We hope to contribute to environmental conservation. Since our founding, we have succeeded in growing our business alongside the development of the manufacturing industry. During the course of achieving materially rich lives, Japan has faced environmental pollution as the world has confronted environmental problems global in scale. As we continue offering solutions to manufacturing’s challenges, we believe we must make environmental issues a main theme in our work. Some of the practices we can implement for this are offering proposals to customers for products and manufacturing methods with a low environmental burden as well as collecting and recycling used cutting equipment. Apart from this work, we are also engaged in the \*Kyoto Model Forest movement and cleaning the environment surrounding our company. In carrying out these activities, I feel our employees have cultivated a “spirit” for how they approach their work. And believing that a balanced work and private life is essential to self-motivated study, we have focused on developing the environment and systems of our workplace.

\*The Kyoto Model Forest movement is an initiative, originating in Canada, for sustainable regional development that is currently being carried out by Kyoto Prefecture.



This logo is applied to products and services offered by our company that carry special environmental-friendly features.

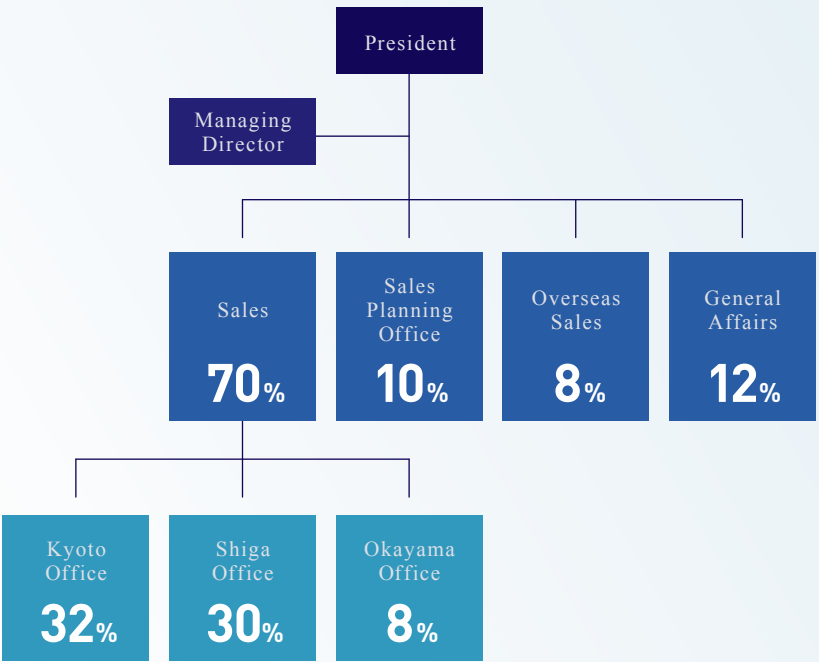
Company Profile

Company Name	Sankyo-Seiki Co., Ltd.
Founded	1942
Capital	10 million yen
President	Takeshi Ishikawa
Employees	55
Head Office	601-8328 49 Kujoyo-cho Kisshoin Minami-ku , Kyoto Japan TEL/+81-75-681-5711 FAX/+81-75-672-5430
Shiga Office	520-3015 7-6-2 Anyoji Ritto-shi Shiga TEL/+81-77-552-3770 FAX/+81-77-553-7124
Okayama Office	700-0971 22-16-3 Noda Kita-ku Okayama-shi Okayama TEL/+81-86-245-3180 FAX/+81-86-805-1656
SANKYO MACHINE TOOLS MALAYSIA SDN BHD	B-28-19,Mercu Summer Suite, Jalan Cendana 8, off Jalan Sultan Ismail,50250 Kuala Lumpur.
UNITED MACHINE TOOL Co., Ltd.	465-0046 4-324 Nozomigaoka Meito-ku Nagoya-shi Aichi TEL/+81-52-771-5077 FAX/+81-52-771-5078
URL	http://www.sankyo-seiki.com

History

1942	Founding president Tamiji Ito founded ITO-SHOTEN in Higashiyama-ku Kyoto.
1948	Incorporated Ito Shoten into Sankyo Seiki Co., Ltd.
1950	Started trading with SHIMADZU CORPORATION.
1954	Started trading with Murata Manufacturing Co., Ltd.
1961	Head Office moved to its current location (Minami-ku Kyoto).
1966	Started trading with NSK Ltd.
1970	Started trading with Mitsubishi Motors Corporation.
1982	Kazutoshi Ito took the post of president.
1986	Shiga Office opened in Ritto-cho Shiga (Currently: Ritto-city Shiga).
2001	Okayama Office opened in Okayama-city Okayama.
2006	Acquired the KES Environmental Management System Standard.
2007	New Shiga Office established and moved to its current location.
2008	Started recycling cutting tools and Kyoto Model Forest activity.
2009	Won Kyoto Environmental Award (Special Award).Takeshi Ishikawa was appointed as president.
2010	Won Kyoto Environmental Award (Report Award).
2016	Purchased UNITED MACHINE TOOL Co., Ltd. Established the Overseas Department.
2017	Established SANKYO MACHINE TOOLS MALAYSIA SDN BHD

Company Organization



Net Sales 2012 to 2016

